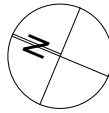




**DIAL1100**  
BEFORE YOU DIG  
www.dialbeforeyoudig.com.au



## LEGEND



PROPOSED AMENDMENT

### MATERIAL FINISHES SCHEDULE :



**AWD**

ALUMINIUM FRAMED  
(COMMERCIAL GRADE)  
WINDOW & DOOR  
ANODISED - SATIN CHARCOAL GREY  
or similar



**FB1**

FACE BRICK  
PGH - MATTERHORN  
or similar



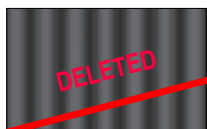
**FB2**

FACE BRICK  
PGH - BLUE STEEL FLASH  
or similar



**GB**

GLASS BALUSTRADE  
CLEAR TEMPERED / TOUGHENED GLASS



**MC1**

COMPOSITE CLADDING  
(VERTICAL)  
DULUX - BRIGHT DELIGHT  
or similar



**MC2**

CSR CEMINTEL FIBER CEMENT CLADDING  
(HORIZONTAL)  
DULUX - LINSEED  
or similar



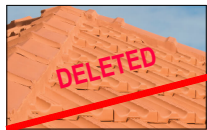
**PF1**

RENDER & PAINT FINISH  
DULUX - LINSEED  
or similar



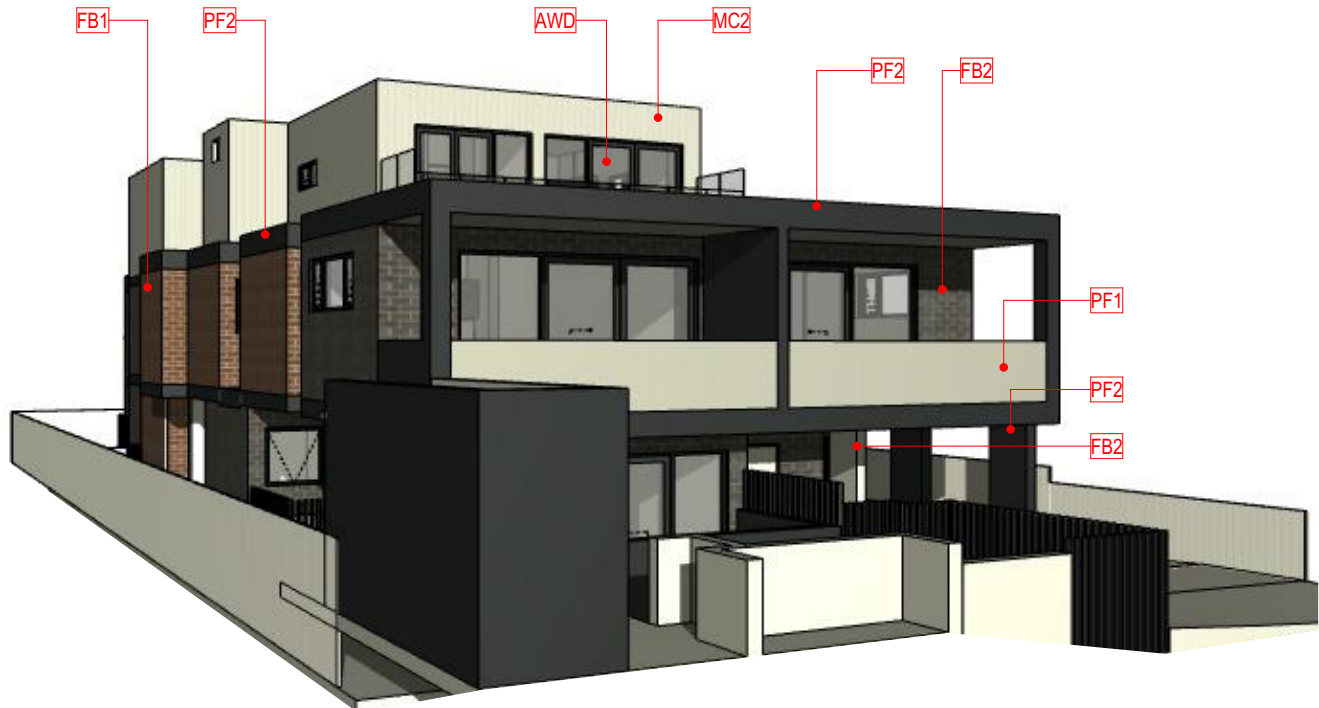
**PF2**

RENDER & PAINT FINISH  
DULUX - OOLONG  
or similar



**TT1**

TERRACOTTA ROOF TILES  
BORAL - FRENCH TERRACOTTA SYDNEY RED  
or similar



3D VIEW FROM FLETCHER ST



3D VIEW - REAR

01	FOR S4.56	02.02.2024
Rev	ID	Description
		Date

Client	WY Constructions Pty Ltd
Drawn	RC
Checked	SW
Scale	1:100@A3
Job No.	2317
Project Status	S4.56
Project Address	27 FLETCHER ST, CAMPSIE, NSW 2194
Drawing Title	

## 3D VIEW & FINISH SCHEDULE

Plot Date	Friday, 2 February 2024, 1:08 PM
Drawing Number	Issue

DA-702 01

**FOR S4.56**



DO NOT SCALE OFF THIS  
DRAWING - USE FIGURED  
DIMENSIONS ONLY - VERIFY ALL  
DIMENSIONS ON SITE - RESOLVE  
DISCREPANCIES WITH ARCHITECT  
BEFORE PROCEEDING.  
COPYRIGHT OF THIS DRAWING  
AND THE DESIGNS EXECUTED  
REMAIN VESTED WITH SWA  
GROUP.

SWA Group  
NSW Registration # 7099  
Suite 12, 16-18 Malvern Ave.  
Chatswood NSW 2067  
+61 2 8599 1988  
admin@swagroup.com.au

